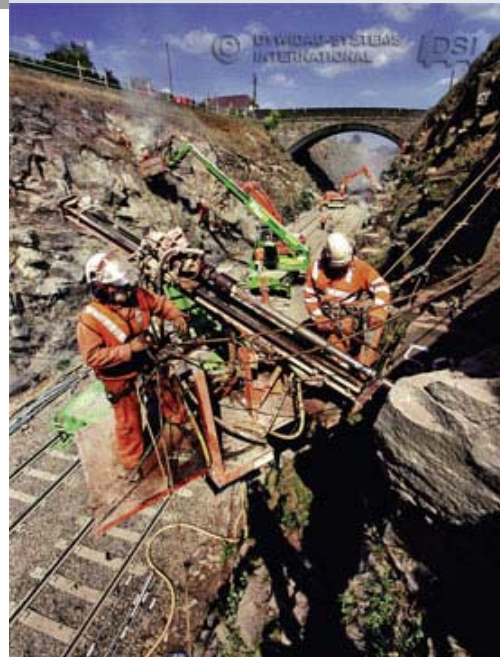
**DSI References**

**Owner** Network Rail, Great Britain +++ **General Contractor** GWESPA / A. McAlpine, Great Britain +++ **Engineer** Tony Gee & Partners, Great Britain +++ **Installation Subcontractor** CAN Geotechnical Ltd., Great Britain **DSI Unit** CAN Geotechnical Ltd., Great Britain **DSI Scope** Supply of 1,200 pcs galvanized DYWIDAG Soil Nails Ø25 mm in lengths varying from 5 to 7 m



## Winterbourne Railway Cut near Bristol

Use of DYWIDAG Soil Nails to stabilize slopes in the UK

An interesting example of the use of DYWIDAG Soil Nails using *GEWI*<sup>®</sup> Threadbars was the cut for a railroad line near Winterbourne near Bristol in the UK, where unstable rock faces on both sides of the line were reinforced with galvanized *GEWI*<sup>®</sup> Threadbars up to 7 meters long.

For the installation of 1,200 25 mm diameter DYWIDAG Soil Nails, the railroad line had to be temporarily closed so that six drill rigs could be used in the narrow cut.

